

\$475,000 - 1000 Eha St, Unit 21-105, Wailuku

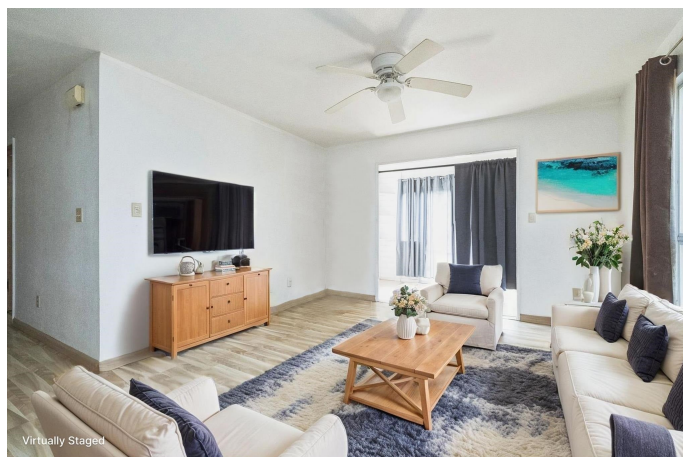
MLS® #405385

\$475,000

3 Bedroom, 2.00 Bathroom, 960 sqft
Residential on 9 Acres

Iao Parkside, Wailuku, HI

Welcome home to Iao Parkside! This rarely available 3-bedroom, 2-bathroom original unit offers a fantastic opportunity to customize and create your ideal Maui retreat. With a spacious layout and endless potential, this ground-floor condo is perfect for those looking to add their personal touch. Enjoy the convenience of ground-floor living with easy access to your own private, grassy yard—perfect for morning coffee, outdoor dining, or simply relaxing in the island breeze. Nestled in the heart of Wailuku, Iao Parkside offers a desirable community setting with a gathering area and close proximity to golf courses, scenic trails, and Kahului’s shopping and dining. Plus, you’re just a short drive from the breathtaking Iao Valley State Park, where you can explore lush trails and enjoy serene natural beauty. This is an incredible chance to own a piece of paradise at a reasonable price and make it your own. Don’t miss out—contact your favorite Realtor to schedule a private showing today!



Built in 1994

Essential Information

MLS® #	405385
Price	\$475,000
Bedrooms	3
Bathrooms	2.00
Square Footage	960

Acres	9.10
Year Built	1994
Type	Residential
Sub-Type	Condominium
Land Tenure	Fee Simple
Style	Low-Rise 1-3 Stories
Status	Closed

Community Information

Address	1000 Eha St, Unit 21-105
Area	Wailuku
Subdivision	Iao Parkside
Building Name	Iao Parkside II
City	Wailuku
State	HI
Zip Code	96793

Amenities

Utilities	Phone Connected, Cable Connected
View	Other
Waterfront	None

Exterior

Roof	Asphalt/Comp Shingle
Foundation	Concrete Slab

Additional Information

Listed By	Keller Williams Realty Maui-Ki
Date Listed	March 25th, 2025
Days on Market	109
Zoning	Light Industrial

This information is believed to be accurate. It has been provided by sources other than the Realtors Assoc. of Maui and should not be relied upon without independent verification. You should conduct your own investigation and consult with appropriate professionals to determine the accuracy of the information provided and to answer any questions concerning the property and structures located thereon. Featured properties may or may not be listed by the office/agent presenting this brochure. Copyright, 1995-2015, REALTORS® Association of Maui, Inc. All Rights Reserved.